

# Mobile construction kit hydraulics



## Modular. Mobile modular system.

A characteristic feature of the mobile modular system is the possibility of combining the various CLAAS valve series - the CL03, CL04 and CL05 cartridge valve series, as well as the CL06 LS directional control valve discs. If required, based on our many years of experience, we offer the possibility of adding individual functions to

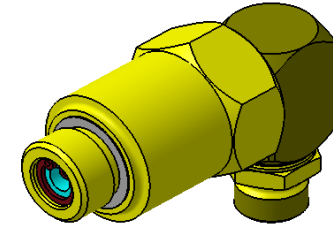
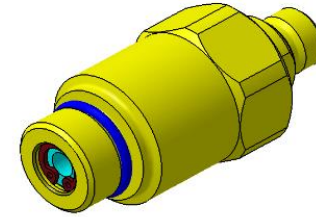
these modular blocks or adapting them to special installation situations. The modular structure enables us to create customized solutions for your applications. High-quality components and 100% testing of all cartridges ensure reliable operation of your machines.



	CL03	CL04	CL05	CL06	ND35
Valve type		Cartridge poppet valves		Directional control valve washers	Low pressure poppet valves
Nominal volume flow	20 l/min	50 l/min	70 l/min	40 (100) l/min	15 l/min
Pressure	210/270 bar	350 bar	270 (350) bar	350 bar	35 bar
Extension possibility	Screw-in- screw system	Screw-in- screw system	[-]	[-]	[-]
Attributes	El. seat switching valves <ul style="list-style-type: none"> <li>• 2/2-way double-sealed</li> <li>• 2/2-way single-seated</li> <li>• 3/2-way Pressure regulating valves</li> <li>• Shut-off valves</li> <li>• Customized special functions</li> <li>• Directional control valve discs, flangeable</li> </ul>	El. seat switching valves <ul style="list-style-type: none"> <li>• 2/2-way double-seated (direct operated up to 70 l/min)</li> <li>• 3/2 waysProportional spool valves</li> <li>• Shut-off valves</li> <li>• Pressure regulating valves</li> <li>• Flow control valves</li> <li>• Pressure relief valves</li> <li>• Customized special functions</li> </ul>	El. spool valves <ul style="list-style-type: none"> <li>• 4/2-wayLocking valves</li> <li>• Customer specific special functions</li> </ul>	LS valve kit consisting of directional valve discs, as well as inlet and end plates <ul style="list-style-type: none"> <li>• Open center and closed center input discs</li> <li>• Direct operated up to 40l/minPilot operated up to 100l/min</li> <li>• Load independent</li> <li>• Secondary functions flangeable</li> <li>• Adapter plates for combination with CL03/04 functions</li> </ul>	El. seat switching valves <ul style="list-style-type: none"> <li>• 3/2-way</li> <li>• Soft-switching "quasi-proportional" variant for coupling functions</li> <li>• 1-fold to 8-fold 3/2-way, expandable</li> <li>• Combination blocks with DBV or pressure reducing function</li> </ul>



# Rotating union



## Connects. Transmission of hydraulic power to rotating machine parts.

The compact rotating unions feature zero leakage at speeds up to 2100 1/min. The range of applications extends from low-pressure to 210bar medium-pressure applications. Typical fields of application are the switching of clutches and the adjustment of variators. In order to meet a wide variety of installation space situations, housings with different screw-in threads as well as hydraulic connections for axial and radial connection positions are available. The rotating union with a maximum free passage of 2.5 mm diameter can also assume the function of a throttle valve. For this purpose, different throttle cross-sections down to 1.0mm diameter can be selected, or a throttle RV can be integrated.

Housing	Pin		Connection
M20x1,5-ED	Axial	Ø2,0	1L
<b>M22x1,5-OR</b>		- 12L	8L
M30x2-OR		<b>Ø2,5</b>	
<b>M33x2-OR</b>		- 8L	
Special (on request)		Ø1,0	10L
		Ø1,3	8L
		Ø2,0	Throttle check valve- 8LAdapter M14x1,5 ISO 6149-1
		<b>Ø2,5</b>	